



**piccolo**<sup>®</sup>  
*small is BIG*  
Porcelain Mosaic

**Linen**  
Grip effect

# piccolo®

small is BIG



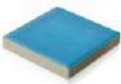


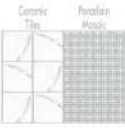

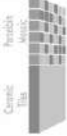

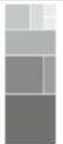
## Linen

### Elegance, Functionality & Freedom of design

PICCOLO porcelain mosaics are a cultivation of a feeling, creation of expectation & excitement, a promise of quality & service-an emotional response to architectural needs with different looks and colours.

PICCOLO gives you the flexibility to select, mix and merge - items, techniques, sizes, looks and colours. Such combinations create infinite and unique design possibilities to suit your taste and ambience.

Through PICCOLO range, designers have freedom to explore 1000+ options with 7 sizes, 6 looks and 200+ colours.

<b>DURABILITY</b>		Porcelain Body ≤ <b>0.5%</b> water absorption	<b>ADAPTABILITY</b>		Easy to fix on curved surfaces
<b>STRENGTH</b>		<b>8</b> mm Thickness for better strength	<b>DESIGN CUSTOMISATION</b>		Techniques Sizes Looks Colours
<b>7 MODULAR SIZES</b>		<ul style="list-style-type: none"> <li>■ 2.5 x 2.5 cm</li> <li>■ 5 x 5 cm</li> <li>■ 7.5 x 7.5 cm</li> <li>■ 10 x 10 cm</li> <li>■ 2.5 x 5 cm</li> <li>■ 2.5 x 7.5 cm</li> <li>■ 5 x 10 cm</li> </ul>	<b>SEAMLESS EFFECT</b>		Mosaic application creates seamless effect
<b>TECHNIQUES</b>		Aligned Classic Modular  Infinite pattern possibilities	<b>SURFACE COMPATIBILITY</b>		8 mm thickness Better compatibility with ceramic tile surface
<b>SAFETY</b>		<b>Grip</b> On Floor for better grip in wet areas	<b>OPTIONS</b>		<b>1000+</b> to explore 7 sizes 6 looks 200+ colours



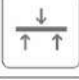







INNOVATIVE ASSEMBLING



State-of-the-art Polyurethane link assembling through Robot



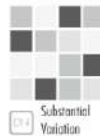
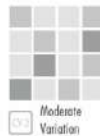
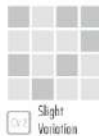
DIMENSION & WEIGHT									
Particulars		Aligned							Classic / Modular
		2.5 x 2.5 cm	2.5 x 5 cm	2.5 x 7.5 cm*	5 x 5 cm	5 x 10 cm	7.5 x 7.5 cm*	10 x 10 cm	
Mosaic	Nominal Size	2.5 x 2.5 cm	2.5 x 5 cm	2.5 x 7.5 cm	5.07 x 5.07 cm	5.07 x 10.07 cm	7.6 x 7.6 cm	10.14 x 10.14 cm	Design dependent
	Actual Size	2.34 x 2.34 cm	2.34 x 4.84 cm	2.34 x 7.34 cm	4.84 x 4.84 cm	4.84 x 9.84 cm	7.34 x 7.34 cm	9.84 x 9.84 cm	Design dependent
	Thickness	~ 8 mm							
Sheet	Mosaic Pcs.	12 x 12 = 144 Pcs.	12 x 6 = 72 Pcs.	12 x 4 = 48 Pcs.	6 x 6 = 36 Pcs.	6 x 3 = 18 Pcs.	4 x 4 = 16 Pcs.	3 x 3 = 9 Pcs.	Design dependent
	Nominal Size	30 x 30 cm	30 x 30 cm	30 x 30 cm	30.42 x 30.42 cm	30.42 x 30.21 cm	30.42 x 30.42 cm	30.42 x 30.42 cm	Design dependent
	Actual Size	29.84 x 29.84 cm	29.84 x 29.84 cm	29.84 x 29.84 cm	30.19 x 30.19 cm	30.19 x 29.98 cm	30.15 x 30.15 cm	30.12 x 30.12 cm	Design dependent
	Joint Gap	~ 1.6 mm	~ 1.6 mm	~ 1.6 mm	~ 2.30 mm	~ 2.30 mm	~ 2.65 mm	~ 3.0 mm	~ 1.6 mm
	Coverage	0.090m <sup>2</sup> / 0.969ft <sup>2</sup>	0.090m <sup>2</sup> / 0.969ft <sup>2</sup>	0.090m <sup>2</sup> / 0.969ft <sup>2</sup>	0.093m <sup>2</sup> / 0.999ft <sup>2</sup>	0.092m <sup>2</sup> / 0.989ft <sup>2</sup>	0.093m <sup>2</sup> / 0.996ft <sup>2</sup>	0.093m <sup>2</sup> / 0.996ft <sup>2</sup>	Design dependent
Weight	~ 1.500 kgs								
Sq.Mtr.	No. of sheets	~ 11							
	Weight	~ 16.500 kgs							

TECHNICAL CHARACTERISTICS & TEST DATA			
	<b>WATER ABSORPTION</b>	ISO 10545-3	≤ 0.5%
	<b>BREAKING STRENGTH</b>	ISO 10545-4	Passes
	<b>MODULUS OF RUPTURE</b>	ISO 10545-4	Passes
	<b>RESISTANCE TO SURFACE ABRASION</b>	ISO 10545-7	Resistant
	<b>RESISTANCE TO THERMAL SHOCK</b>	ISO 10545-9	Resistant
	<b>RESISTANCE TO GLAZE CRACKING</b>	ISO 10545-11	Resistant
	<b>RESISTANCE TO FROST</b>	ISO 10545-12	Resistant
	<b>RESISTANCE TO CHEMICAL ATTACK</b>	ISO 10545-13	Resistant
	<b>RESISTANCE TO STAIN</b>	ISO 10545-14	Resistant
	<b>LIGHT AND COLOUR FASTNESS</b>	DIN 51094 / SS301	Passes

\*Available in 'Aqua' collection

Mosaic colours shown here are purely indicative, tonal variation is an inherent characteristics of high temperature fired product.

### Aesthetic Classes (ANSI A137.1-2008)



**Linen** Grip effect

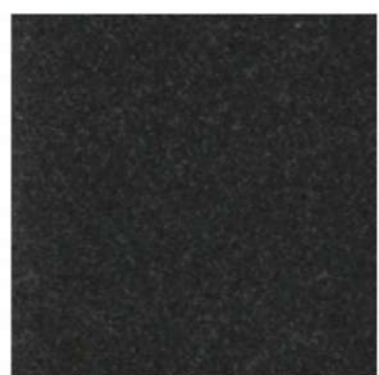
■ 2.5 x 2.5 cm | 5 x 5 cm



CV1 501-L<sup>1</sup>



CV1 626-L<sup>1</sup>



CV1 520-L<sup>4</sup>



CV1 503-L<sup>1</sup>



CV1 504-L<sup>1</sup>



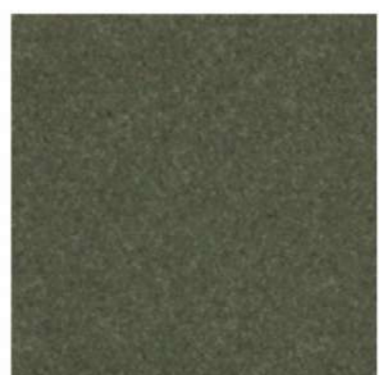
CV2 506-L<sup>1</sup>



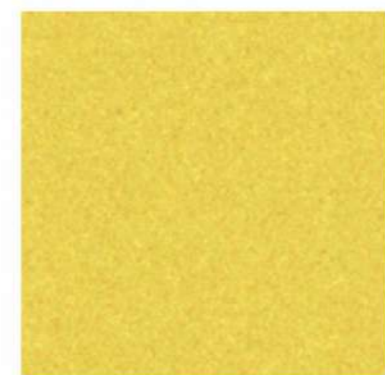
CV1 612-L<sup>1</sup>



CV1 604-L<sup>2</sup>



CV2 616-L<sup>1</sup>



CV2 654-L<sup>3</sup>



CV2 663-L<sup>4</sup>



CV2 673-L<sup>4</sup>

piccolo



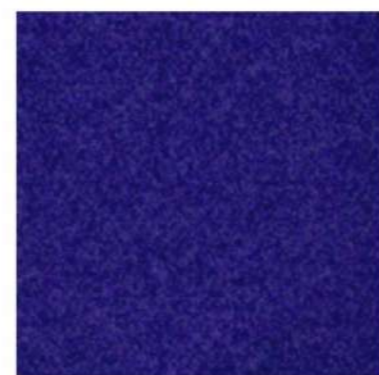
CV1 540-L<sup>3</sup>



CV1 525-L<sup>2</sup>



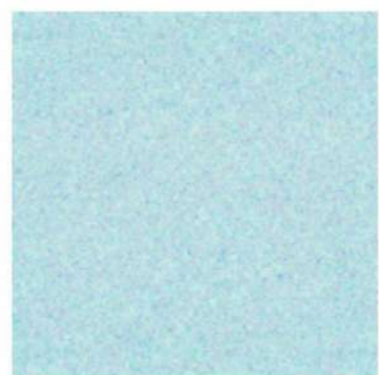
CV1 523-L<sup>1</sup>



CV1 537-L<sup>3</sup>



CV1 563-L<sup>2</sup>



CV1 561-L<sup>1</sup>



CV2 625-L<sup>3</sup>



CV2 623-L<sup>2</sup>



CV1 621-L<sup>1</sup>



CV1 631-L<sup>1</sup>



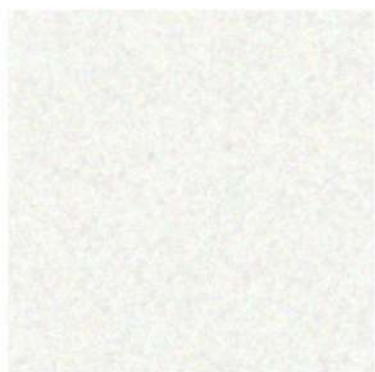
CV1 590-L<sup>4</sup>



CV2 628-L<sup>2</sup>

# Linen Grip effect

■ 2.5 x 2.5 cm | 5 x 5 cm



CV1

501-L<sup>1</sup>



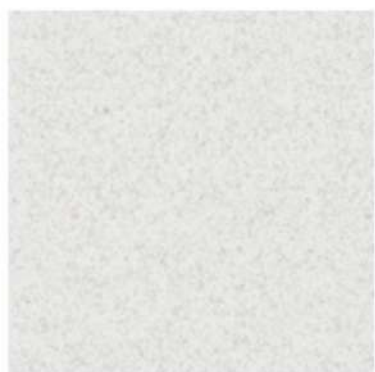
CV1

626-L<sup>1</sup>



CV1

520-L<sup>4</sup>



CV1

503-L<sup>1</sup>



CV1

504-L<sup>1</sup>



CV2

506-L<sup>1</sup>



CV1

612-L<sup>1</sup>



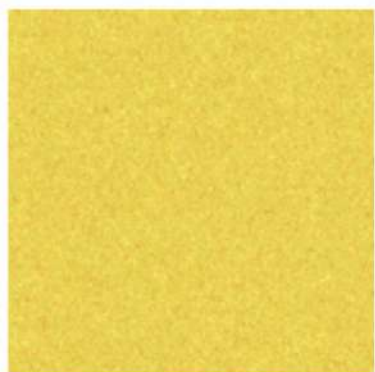
CV1

604-L<sup>2</sup>



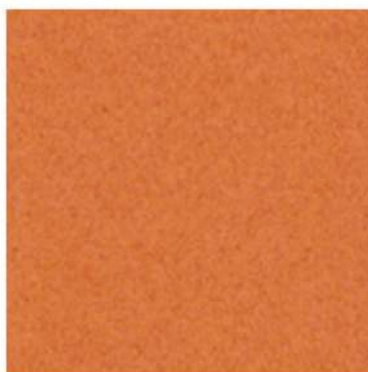
CV2

616-L<sup>3</sup>



CV2

654-L<sup>3</sup>



CV2

663-L<sup>4</sup>



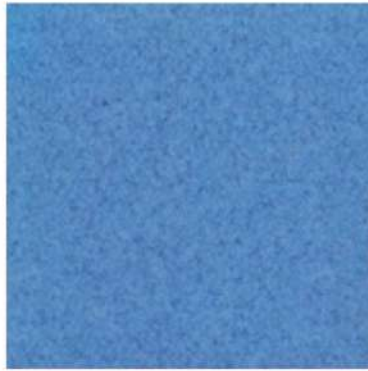
CV2

673-L<sup>4</sup>



CV1

540-L<sup>3</sup>



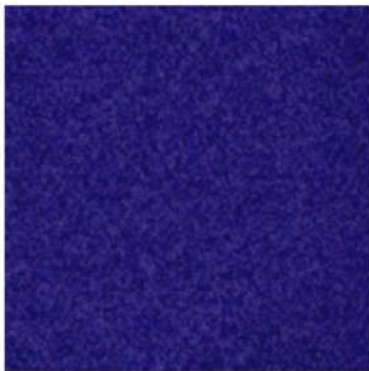
CV1

525-L<sup>2</sup>



CV1

523-L<sup>1</sup>



CV1

537-L<sup>3</sup>



CV1

563-L<sup>2</sup>



CV1

561-L<sup>1</sup>



CV2

625-L<sup>3</sup>



CV2

623-L<sup>2</sup>



CV1

621-L<sup>1</sup>



CV1

631-L<sup>1</sup>



CV1

590-L<sup>4</sup>



CV2

628-L<sup>2</sup>

**piccolo**<sup>®</sup>  
*small is BIG*  
Porcelain Mosaic

**Piccolo Mosaic Limited**

**Corporate Office :**

4th Floor, Samaan II, Anand Nagar, Ahmedabad - 380 015, Gujarat, INDIA.  
Board: +91 79 4000 6000 | Fax: +91 79 4000 6200 | e-mail: [piccola@italiagroup.in](mailto:piccola@italiagroup.in) | URL: [www.piccolomosaic.in](http://www.piccolomosaic.in), [www.italiagroup.in](http://www.italiagroup.in)

**Manufacturing Plant :**

Plot No. 36, Ganeshpura Kaiyal Road, Vlg.- Kaiyal - 382 705, Tal.- Kadi, Dist.- Mehsana, Gujarat, INDIA.